

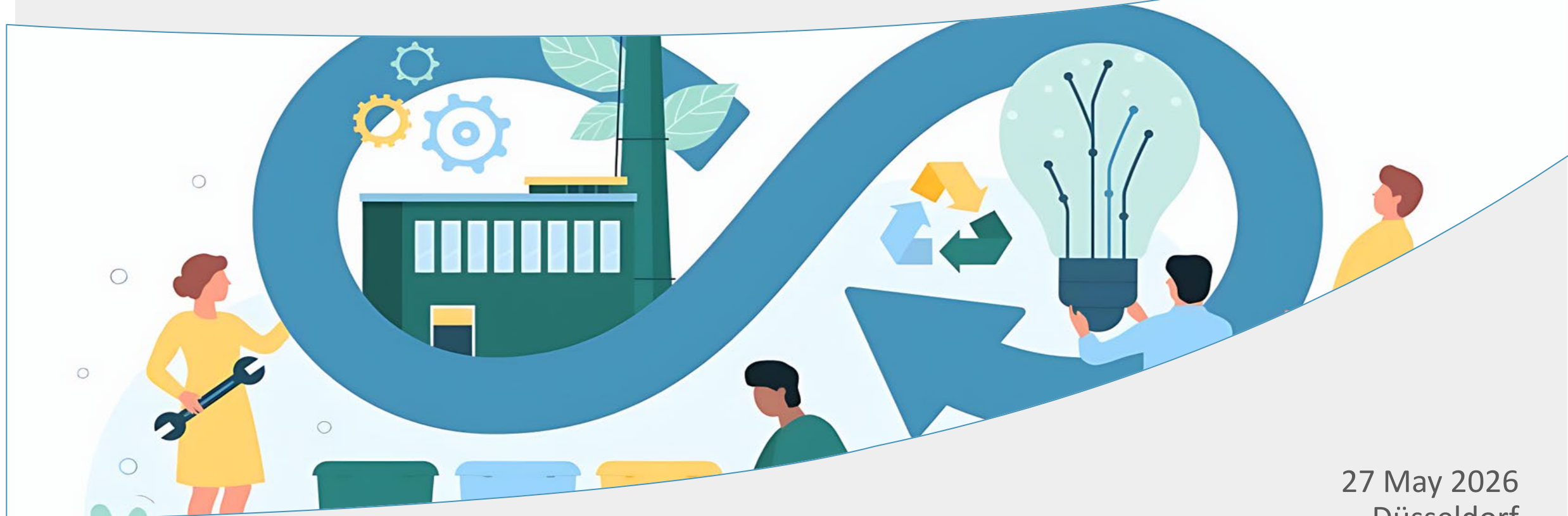
# Get to know CE.NRW - Portfolio and focus



**NRW.ENERGY  
4CLIMATE**

Landesgesellschaft  
für Energie und Klimaschutz

Dr. Constantin von Selasinsky

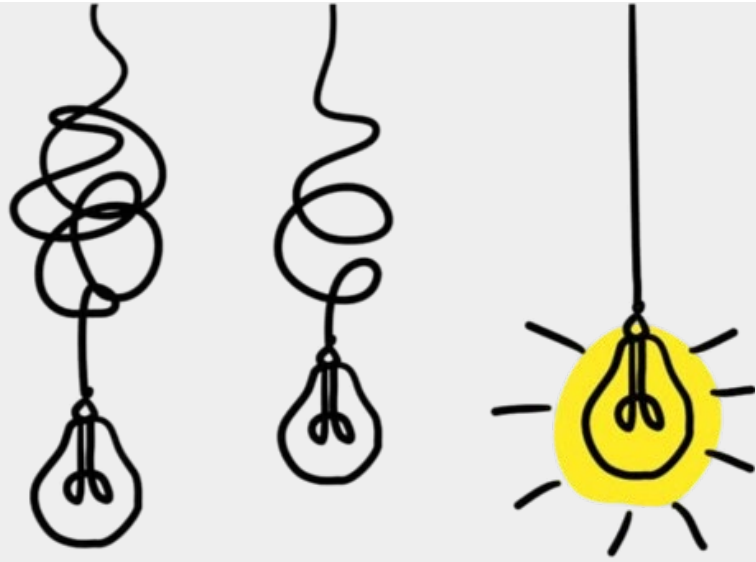


27 May 2026  
Düsseldorf



# A product that is designed to last

- **Durability**—The watch is designed for long-term use
  - **Repairability and maintenance**—The watch can be repaired and continued to be used
  - **Replaceability of parts**—Long-term availability of parts allows for repair rather than complete replacement
- Circular economy is not an entirely new way of thinking, as high-quality industrial products have long demonstrated this approach



## Going full circle

- Good examples show that circular economy is practical and scalable
- Design for durability, repair, and reuse must once again become the norm today
- We at CE.NRW bring together stakeholders who are advancing such approaches in North Rhine-Westphalia

# CE.NRW: Meet the team



**Dr. Constantin von  
Selasinsky**  
Head of Unit

HHU - Fraunhofer IAIS -  
MWIKE - E4C



**Leon Flöer**

Project Manager  
Economy

TU Darmstadt - dena -  
E4C



**Felix Blossey**

Project Manager  
Municipalities

RUB - MWIKE - E4C



**Janine Baleis**

Communications  
Consultant

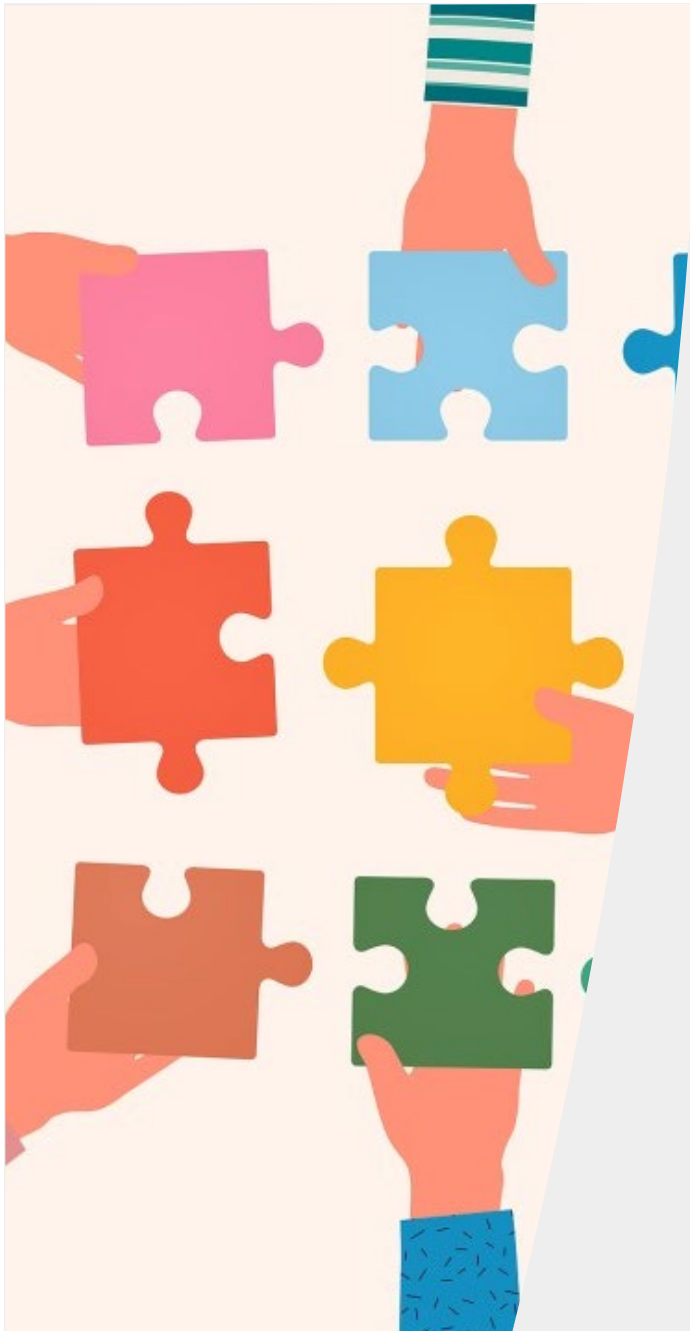
HHU - Bundestag - E4C



**Adrian Hohendorff**

Project Manager  
Economy

FH Münster - Consulting  
- E4C



## CE.NRW: What we offer

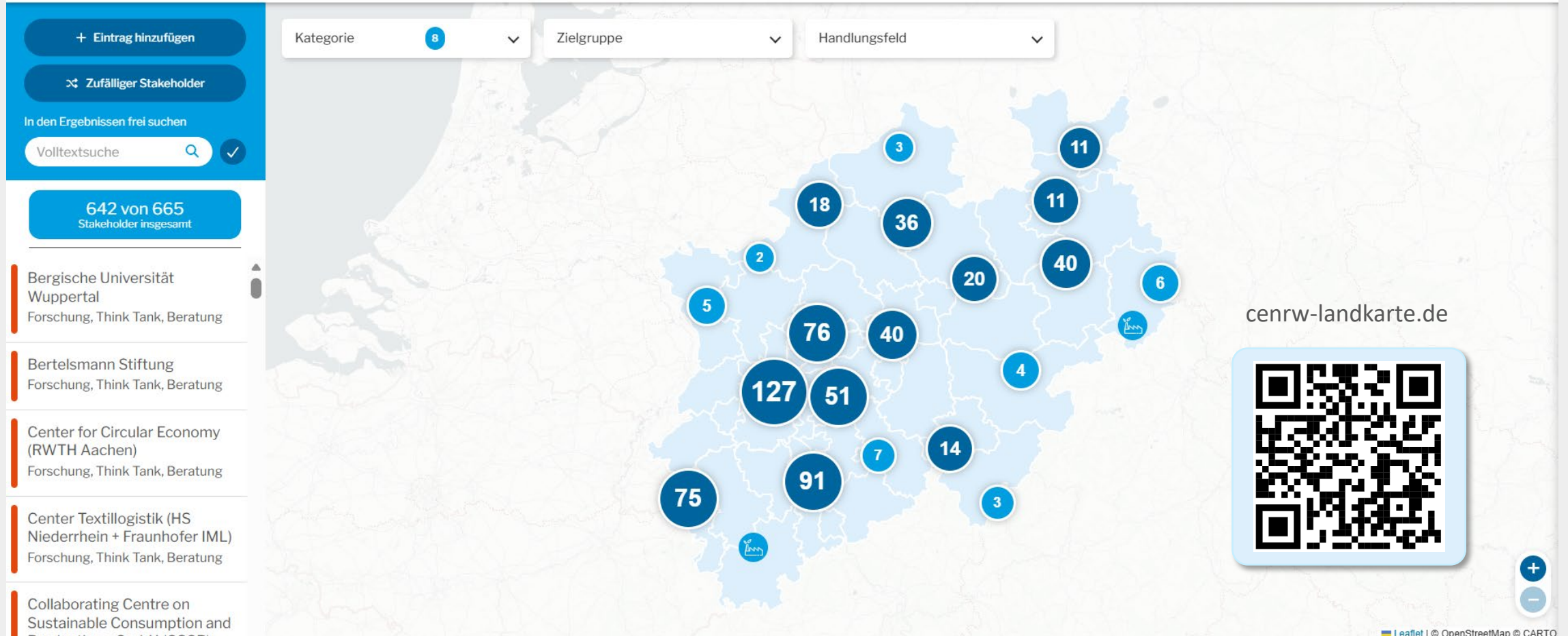
### For the established Circular Economy community in NRW

- Activating the community and promoting **synergies**
- **Building bridges** between politics, administration, business, science
- Pointing out **white spots** and **double structures**

### For companies and municipalities that want to go circular in NRW

- Offering (low-threshold) **central point of contact** & initial consultation for companies and municipalities
- **Matching** newcomers with the established community

# Stakeholder mapping



# Overview of Funding (North Rhine-Westphalia, Germany, EU)



## Project idea

We provide initial advice with a focus on alignment with political strategies, regulations, and funding opportunities..



## Funding

We identify suitable funding and financing opportunities and support you in communications with funding agencies and ministries.



## Project outline

We review and refine your outline together with you before submission as part of your funding application.



## Consortium formation

We provide you access to interested companies in our network to bring together suitable partners for project implementation.



## Application submission

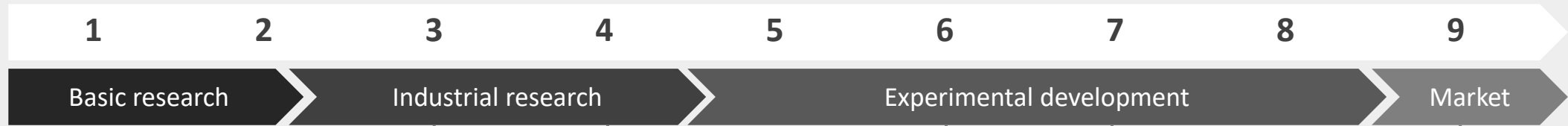
We assist in preparing your project application and support the process with a Letter of Intent.



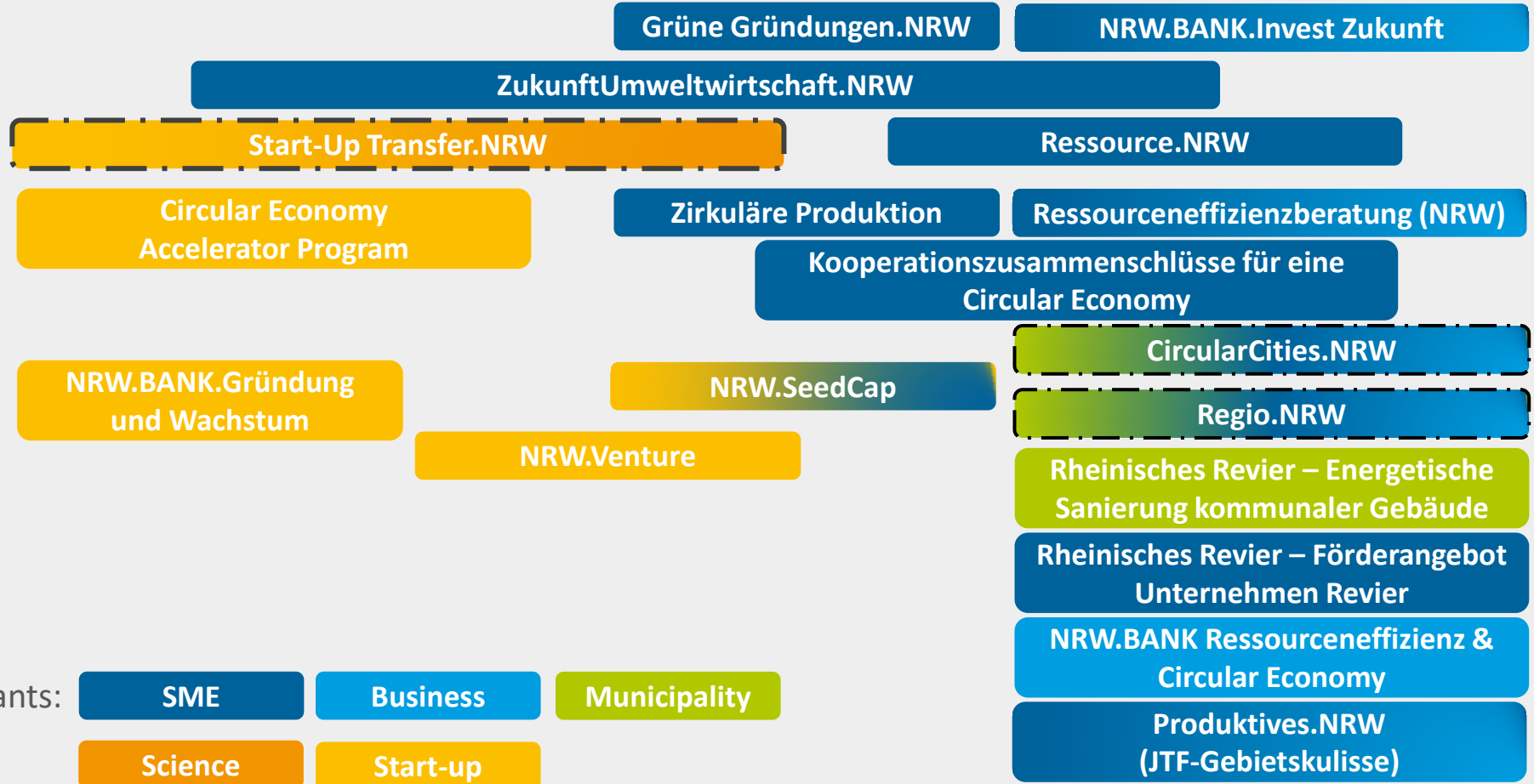
## Project implementation

We provide our technical expertise and, upon agreement and invitation, participate in project meetings and events.

TRL



Proof of Concept Experimental setup in the laboratory Prototype in operational environment Prototype in use Successful implementation in operational environment



**Key**

Eligible applicants:

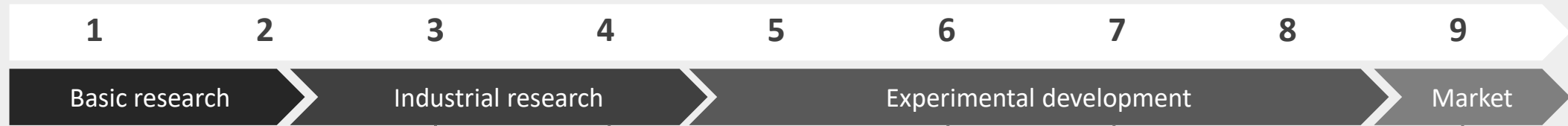


Program status:

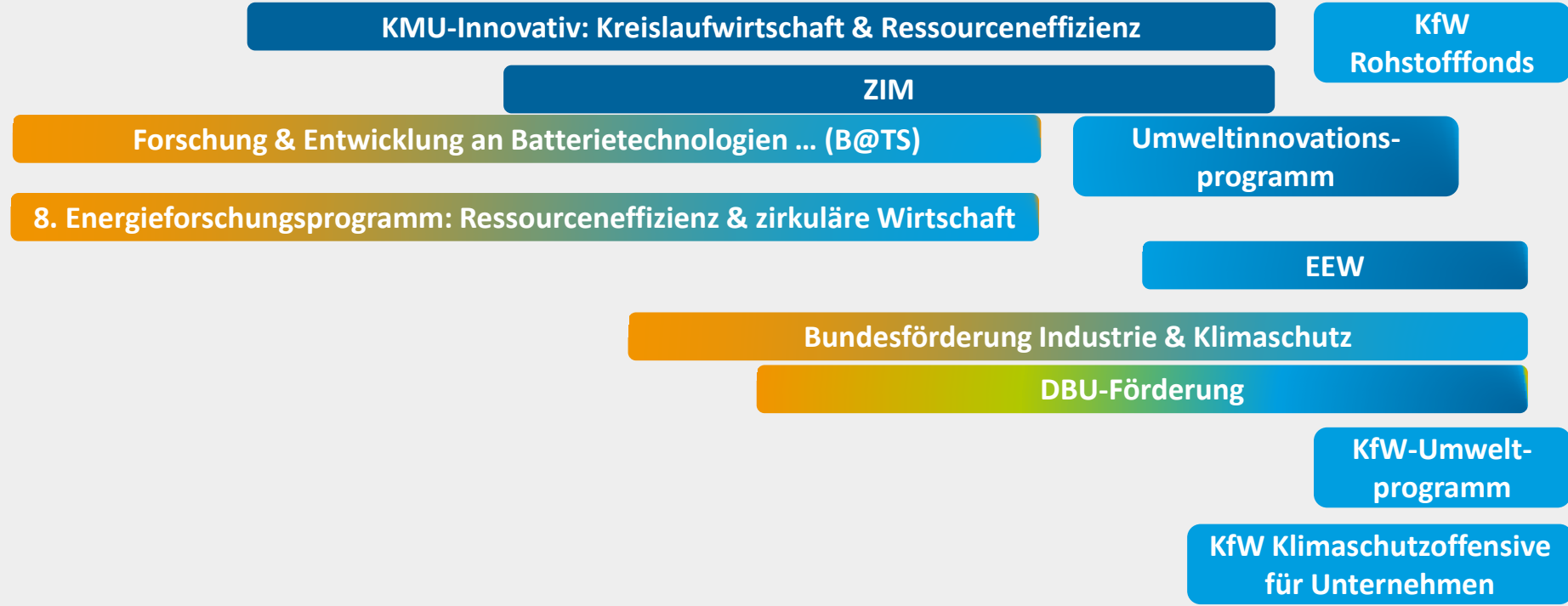


\*Indicative representation, not a claim of correct TRL assignment

TRL



● Proof of Concept ● Experimental setup in the laboratory ● Prototype in operational environment ● Prototype in use ● Successful implementation in operational environment



**Key**

Eligible applicants:



Program status:



\*Indicative representation, not a claim of correct TRL assignment

TRL



Basic research

Industrial research

Experimental development

Market

Proof of Concept

Experimental setup in the laboratory

Prototype in operational environment

Prototype in use

Successful implementation in operational environment

**Innovation Fund – Net-Zero Technologies Call**

**Industrial scale up and circularity pathway for IPV technologies**

**Boosting circularity and diversification strategies of terrestrial livestock production systems**

**Improving circularity of multilayer flexible plastic food contact packaging**

**Optimise the usage of resources in a circular economy**

**Circular innovative advanced materials: facilitating the transition from design to markets**



**Key**

Eligible applicants:

**SME**

**Business**

**Municipality**

**Science**

**Start-up**

Program status:

Not active

Active

Future active

\*Indicative representation, not a claim of correct TRL assignment

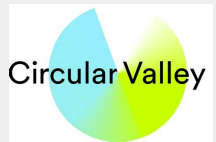
# Funding advisory services



## **Effizienzagentur NRW (efa)**

*Advice on resource efficiency, CIRCO Hub (workshops on circular business models), funding advisory services, training programs*

[Link](#)



## **Circular Valley Foundation (Start-ups)**

*Circular Economy Accelerator Program*

[Link](#)



## **ZENIT**

*Sustainability consulting, funding overview, funding advisory services, project matchmaking*

[Link](#)



## **NRW.BANK**

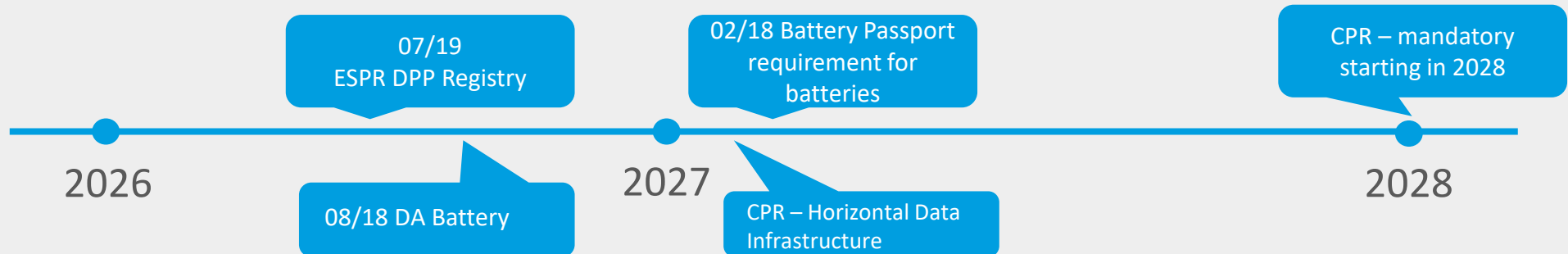
*Advisory services through the Venture Center, networking, financing  
Management of funding programs:  
resource efficiency & circular economy,  
Invest Zukunft, among others*

[Link](#)

# Event about the DPP



The **Digital Product Passport (DPP)** is a **digital ID** for a product. It makes important information—such as materials, repairability, and recycled content—**electronically accessible** via a QR code or another data carrier.



## Interactive event about the DPP

16th June 2026 9:00 am to 06:00 pm

Hochschule Ruhr West, Bottrop

[Link to event](#)



**NRW.ENERGY  
4CLIMATE**

Landesgesellschaft  
für Energie und Klimaschutz

# Thank you!

NRW.Energy4Climate GmbH

Bildnachweise: © NRW.Energy4Climate,  
© Pixabay, © Pexels, © Getty Images, © Schulz